



care  
extended.

## Access



**111**  
Medical sites



**98**  
Behavioral  
health sites



**61**  
Dental sites



**54**  
School-based  
clinics



**90 NM Communities**

196 Clinic sites - 80% located in  
rural communities with limited or no  
other service providers.

## Service

**350,000+** patients from every county in New Mexico

**211,000** patients under 100% Federal Poverty Level  
(56% of all New Mexicans under 100%)

**62,000** of clinic patients are uninsured  
(28% of New Mexico's uninsured)

**63%** of clinic patients  
have incomes  
under 100% FPL and  
**90%** of incomes  
below 200% FPL

**367,000** screenings for depression and/or obesity

**35,000**

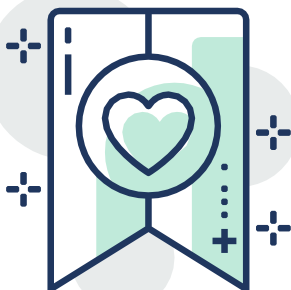
Diabetic patients

**55,000**

Depression and other  
behavioral health patients

**83,000**

Oral health users



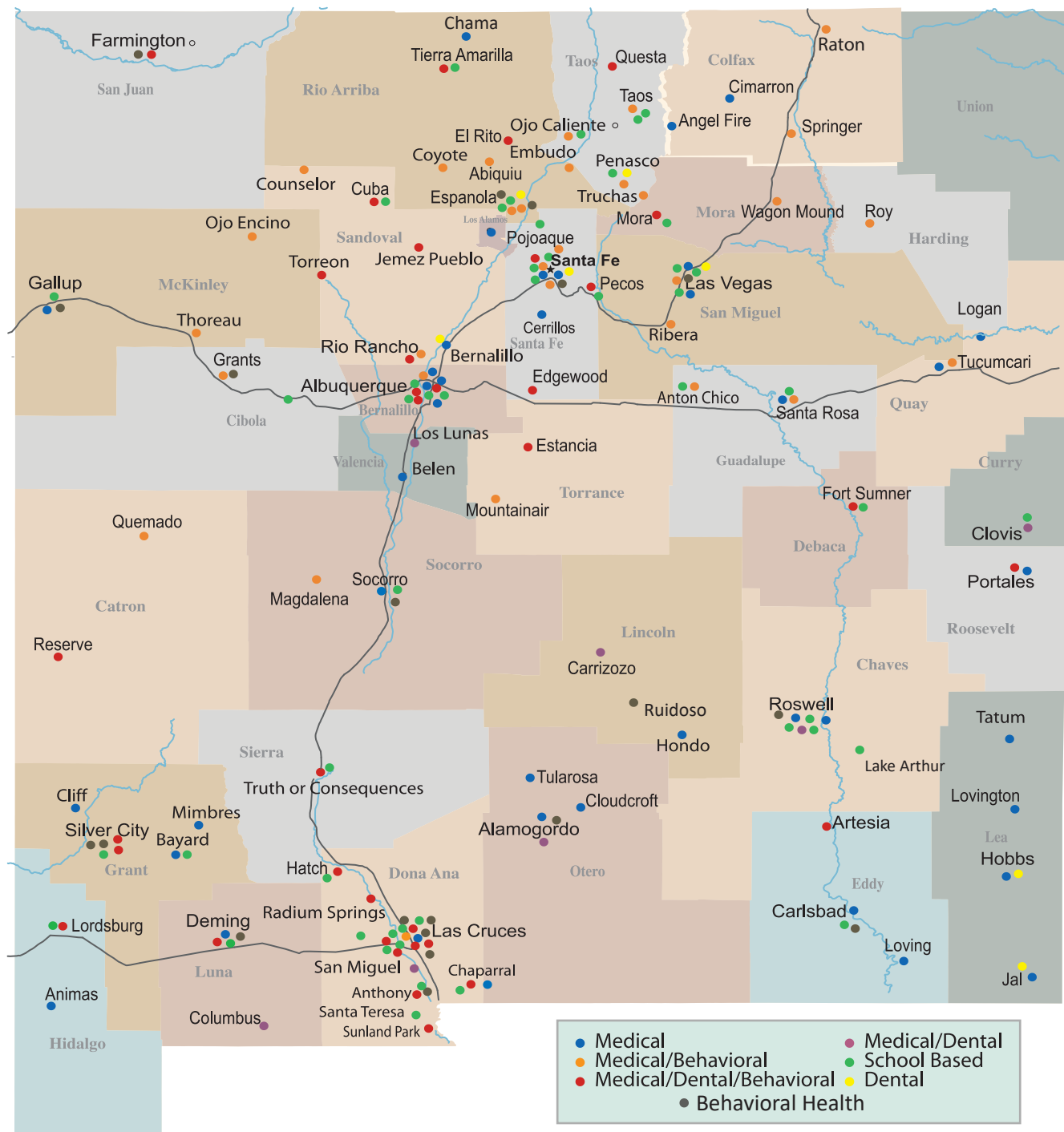
Primary Care Clinics provide the **right** services at the **right** time, to New Mexico's most vulnerable citizens in their local communities.

Primary clinics have been and remain on the front line, fighting Covid-19 in New Mexico's rural Communities.

The State and Federal investments in the Primary Care Safety Net pay healthy dividends, saving lives, dollars, and improving New Mexicans' health status.

**Primary Care Clinics and our Patients thank our state partners, the Department of Health and the Human Services Department, Federal and State Legislators, and Governor Lujan Grisham.**

# New Mexico's Community Primary Health Care Sites



Site Map - New Mexico Primary Care Clinics  
196 sites in 90 New Mexico Communities